

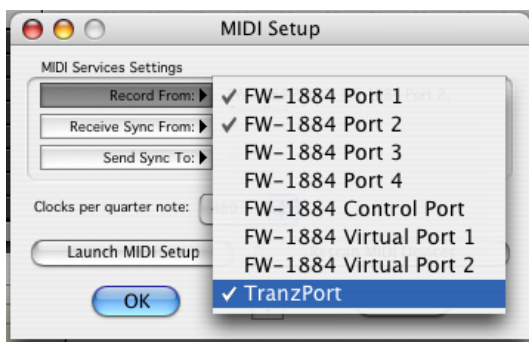
# Sagantech's Metro 6.3 and TranzPort

This document assumes you have already installed the TranzPort driver and have the TranzPort remote ready for operation. (If not, see the TranzPort Users Guide or Quick Start Guide for installation details.) It is based on using TranzPort v1.3.0 drivers with Metro 6.3, but may apply to later versions of software as well.

## Set-up

Before starting Metro, set the TranzPort control mode to “Native” by clicking on the TranzPort status bar icon. This will configure the TranzPort to send and receive the correct set of MIDI messages for use with Metro. For more information on Control Modes see the TranzPort Users Guide.doc.

Open Metro and the MIDI Setup panel from under the Setup menu.



Click on the “Record From” list and enable TranzPort along with any other MIDI devices you may have. Next, open the Remote Control panel from under the Windows menu, select “TranzPort” from the presets list. That’s it!



## Operation

The TranzPort has 18 function buttons, 2 local control buttons, a data wheel, and a backlit 2x20 character LCD display. Silk screened labels clearly indicate the basic functions of the buttons. The SHIFT button allows other buttons to perform more than one function, expanding the range of control that TranzPort has over Metro. SHIFT is a momentary button that is only active while it is being held.

When you open a Metro project, TranzPort’s LCD shows the name of a track in your project, the track number, and the sequencer location.

You may also have one or more status LED's lit indicating the track's solo, mute, and record arm status, and well as LED's indicating loop, and record status. Pressing play will cause the project to begin playback just as if you had clicked the play button on the screen. Likewise most of the buttons function just like their on-screen equivalents.

Below is a chart that describes the normal and shifted functions of each button. You will also find "Metro 6.3 Layout.pdf" on the CD-ROM with this file which serves as a quick visual guide for the TranzPort functions with Metro. You may want to print that document for quick reference.

## TranzPort Button and Data Wheel Functions

Name	Normal Function	Shifted Function
<b>REW</b>	Return	Home
<b>FFWD</b>	Fast forward	End
<b>STOP</b>	Stop	n/a
<b>PLAY</b>	Play	n/a
<b>RECORD</b>	Record	n/a
<b>PREV</b>	Go to previous marker	n/a
<b>ADD</b>	Add marker at current location	n/a
<b>NEXT</b>	Go to next marker	n/a
<b>IN</b>	Set Punch/Loop In	n/a
<b>OUT</b>	Set Punch/Loop Out	n/a
<b>PUNCH</b>	Toggle Punch on/off	n/a
<b>LOOP</b>	Toggle Loop on/off	n/a
<b>&lt; TRACK</b>	Previous track (left/up)	n/a
<b>TRACK &gt;</b>	Next track (right/down)	n/a
<b>REC</b>	Toggle track's record arm on/off	n/a
<b>MUTE</b>	Toggle track's mute on/off	n/a
<b>SOLO</b>	Toggle track's solo on/off	n/a
<b>UNDO</b>	Undo	Redo
<b>DATA WHEEL</b>	Scroll timeline	Adjust Track level
<b>FOOTSWITCH</b>	Record	n/a

## The Data Wheel

In addition to controlling display contrast, backlight level, and the sleep timeout interval when used with the local control buttons (see the User's Guide for details), the data wheel performs several functions within Metro. Rotating the data wheel will move the "now" time along the timeline of your project. This is handy for quickly locating a point to begin playback or recording. However, if you press and hold the SHIFT button while turning the data wheel, you will now be adjusting the level of the selected track. While the level value does not appear on the TranzPort's LCD display you will see the fader move on the Metro mixer panel.

## The Footswitch

While the footswitch isn't programmed to anything by default, it is quite easy to add it as a Record or Play controller. Click "Insert" on the Remote Control panel and select Note On. This will add a new line to the command list. Set Device to TranzPort, Channel to 1, note to G6 for the Footswitch, and then select the command you want from the pop-up list. That's all there is to it.