

MOTU Digital Performer 4 and TranzPort

Changes

From v1.03 to v1.04

The keystroke value for some of the User-Definable combinations has been changed to accommodate changes in OS 10.4 and later.

From v1.02 to v1.03

A max signal level bar was added to the normal meters, along with a clip indication.

Toggle Edit View was moved from SHIFT+PLAY to STOP+PLAY.

A calibrated Big Meters Mode was added, and mapped to SHIFT+PLAY.

Holding the <TRACK or TRACK> button down and turning the data wheel now scrolls through the tracks.

A bug was fixed that prevented shifting the selected track left or right out of a track group if the “selection” option was enabled for that group. Note: when moving out of a group of selected tracks, the track that is selected by TranzPort is currently shown as selected in the DP window along with the track group.

Selecting a track with the mouse will re-sync the displays. We are trying to work with MOTU to fix this issue.

From v1.00 to v1.02

Twelve new user-programmable key combinations are added.

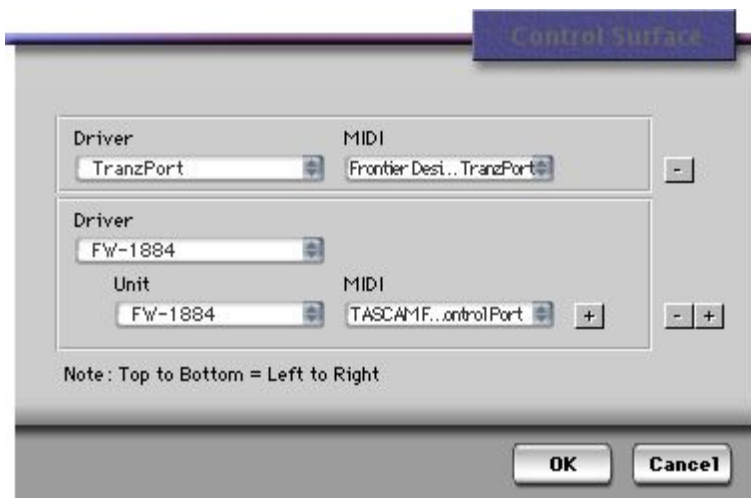
This document assumes you have already installed the TranzPort Mac OS X driver and have the TranzPort remote ready for operation. (If not, see the TranzPort Users Guide or Quick Start Guide for installation details.) It is based on using Digital Performer 4.12 (DP4), or later, with TranzPort v1.0.0 drivers, and the TranzPort.bundle v1.04 control plug-in for DP4, but may apply to later versions of software as well.

DP4 Set-up

First, copy the TranzPort.bundle file from the ‘Digital Performer Plug-In’ folder on the TranzPort CD-ROM, into the Library/Audio/Plug-ins/MOTU Control Surface folder of your Macintosh system drive.

Before starting DP4 click on the TranzPort applet in your taskbar and set the control mode to “TranzPort Native.” This will configure the TranzPort to send and receive the correct set of MIDI messages for use with DP4. For more information on Control Modes see the TranzPort Users Guide.doc.

Start DP4 and open the Setup/Control Surface Setup window. Click on the ‘+’ symbol to add a device to your configuration. Under Driver select “TranzPort” from the available device list. For the MIDI option select “Frontier Design TranzPort-16”. DP4 does allow for multiple control devices if desired. Click OK to close the window. DP4 is now configured to operate with TranzPort.



Operation

The TranzPort has 18 function buttons, 2 local control buttons, a data wheel, and a backlit 2x20 character LCD display. Silk screened labels clearly indicate the basic functions of the buttons. The SHIFT and STOP buttons allow all other buttons to perform more than one function, expanding the range of control that TranzPort has over DP4. Shift and STOP act as momentary buttons that are only active while being held.

When you open a DP4 project, TranzPort's LCD shows the name of the first track in your project, the track fader level, pan position, and the sequencer location. You may also have one or more status LED's lit indicating the track's solo, mute, record arm status, and loop mode status. Pressing play will cause the project to begin playback just as if you had clicked the play button on the screen. Likewise most of the buttons function just like their on-screen equivalents.

The following chart describes the normal and shifted functions of each button. You will also find "Digital Performer Layout.pdf" on the Tranzport CD-ROM which serves as a quick visual guide for the TranzPort functions with DP4. You may want to print that document for quick reference.

TranzPort Button and Data Wheel Functions

Name	Normal Function	SHIFT + Function	STOP + Function
REW	Rewind	Go to start	Modifier key
FFWD	Fast forward	Go to end	
STOP	Stop	ENTER key *	
PLAY	Play	Big Meters	
RECORD	Record	Save	
PREV	Go to previous marker	User-defined as Ctrl+F10	Opt+F10
ADD	Add marker at current location	User-defined as Ctrl+F11	Opt+F11
NEXT	Go to next marker	User-defined as Ctrl+F12	Opt+F12
IN	Set punch in point	Set loop in point	Opt+F6
OUT	Set punch out point	Set loop out point	Opt+F7
PUNCH	Toggle punch mode (No LED)	Enable/Disable Click	Opt+F8
LOOP	Toggle loop mode	Toggle level/pan selection for shifted data wheel changes	Opt+F9
< TRACK	Previous track/bus (left/down)	Show tracks/aux's	Opt+F1
TRACK >	Next track/bus (right/up)	Show Master buses	Opt+F2
REC	Toggle track record arm on/off	Clear all record arming	Opt+F3
MUTE	Toggle track mute on/off	Clear all mutes	Opt+F4
SOLO	Toggle track solo on/off	Clear all solos	Opt+F5
UNDO	Undo last action	Redo last undo	
DATA WHEEL	Scroll timeline	Adjust level or pan	
FOOTSWITCH	Punch in/out		

Track or Bus Control

TranzPort is able to navigate the split Track/Bus architecture of DP4. Holding SHIFT and pressing the “< TRACK” button will place the TranzPort into track mode, allowing the display, data wheel and relevant function buttons to control and display individual track and aux buss parameters. Pressing the “<Track” and “Track>” buttons alone will then let you move from one track to the next. Holding either Track button and turning the data wheel will scroll through the tracks for quick access. The LCD display will show the currently selected track name, track number, and fader and pan settings. Likewise, LED's for record arm, mute, and solo status will update to reflect the state of the selected track. Use the REC, MUTE, and SOLO buttons as well as the data wheel to change or edit the settings for the current track.

Holding SHIFT while pressing “TRACK >” will place the TranzPort into bus mode. This mode operates the same as track mode except that you can now select, and control, any of the Master buses in your DP4 project by pressing the using the same methods as normal tracks. Because a Bus cannot be soloed or armed for record, the SOLO and REC buttons are not available while in bus mode.

When changing Tracks or Buses with TranzPort, the track number will be momentarily displayed beneath the track name as a navigation aid. After a couple of seconds the track number will disappear and be replaced with mono or stereo metering for that track, or bus.

* **SHIFT+STOP** is the keyboard equivalent of ENTER. It is used to remotely clear messages that may appear on screen and otherwise disable the TranzPort. For example, if you press the RECORD button when there are no tracks selected for record a warning message will be displayed on the computer screen. DP4 will not accept any further input from TranzPort or the Mac keyboard until the message is cleared. Pressing SHIFT+STOP will clear the message and allow you to continue without actually going to the computer.

The Data Wheel

In addition to controlling display contrast, backlight level and sleep mode delay when used with the local control buttons, the data wheel performs several functions within DP4. Rotating the data wheel will move the “now” time along the timeline of your project. This is handy for quickly locating a point to begin playback or recording. However, if you press and hold the SHIFT button, an arrow will appear on the display next to the level or pan setting of the selected track or bus. If you continue to hold SHIFT and turn the data wheel, you will now be adjusting the parameter indicated by the arrow. Pressing the LOOP button while holding SHIFT will toggle between level and pan control. As mention above, the wheel can also be used to quickly scroll though tracks by holding either Track button while turning the wheel.

User-definable Buttons

You can assign up to 15 special button combinations to any command from the DP4 Commands menu. The DP4 Commands menu is a list of key bindings that let you customize TranzPort for your needs.

To assign commands to these buttons go to the Setup/Commands panel, or type Shift+L on the Mac keyboard, and follow these steps:

1. Select the desired command from the list in the Commands menu.
2. Click to highlight the box after the command name under ‘MAC KEY 1’, or ‘MAC KEY 2’ if the first entry is already used.
3. On the TranzPort, hold the SHIFT button and press the PREV, ADD, or NEXT button; or hold the STOP button and press Track <, Track >, REC, MUTE, SOLO, IN, OUT, PUNCH, LOOP, PREV, ADD, or NEXT. After a moment you will see the keyboard equivalent of CTRL+F10, CTRL+F11, CTRL+F12, or Opt+F1 through Opt+F12 appear in the box. **Note** - you may need to move the mouse for this to appear.
4. Repeat this for each of the button combinations you wish to program or close the window.

If any of the 15 key commands has already been used a warning message will appear to alert you. You can choose to cancel the command or delete the previous one and add the new one.