

MOTU Digital Performer 4 and TranzPort

Changes

From v1.02 to v1.03

A max signal level bar was added to the normal meters, along with a clip indication.
Toggle Edit View was moved from SHIFT+PLAY to STOP+PLAY.
A calibrated Big Meters Mode was added, and mapped to SHIFT+PLAY.
Holding the <TRACK or TRACK> button down and turning the data wheel now scrolls through the tracks.
A bug was fixed that prevented shifting the selected track left or right out of a track group if the “selection” options was enabled for that group. Note: when moving out of a group of selected tracks, the track that is selected by TranzPort is currently shown as selected in the DP window along with the track group.
Selecting a track with the mouse will resync the displays. We are trying to work with MOTU to fix this issue.

From v1.00 to v1.02

Twelve new user-programmable key combinations are added.

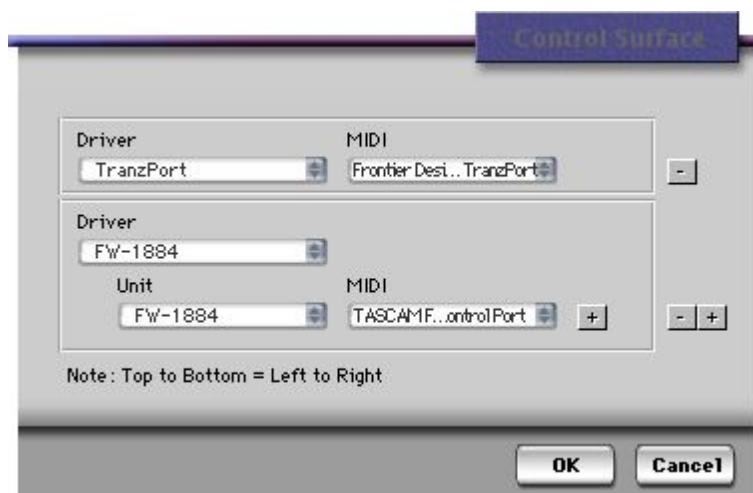
This document assumes you have already installed the TranzPort Mac OS X driver and have the TranzPort remote ready for operation. (If not, see the TranzPort Users Guide or Quick Start Guide for installation details.) It is based on using Digital Performer 4.12 (DP4) with TranzPort v1.0.0 drivers, and the TranzPort.bundle v1.03 control plug-in for DP4, but may apply to later versions of software as well.

DP4 Set-up

First, copy the TranzPort.bundle file from the ‘Digital Performer Plug-In’ folder on the TranzPort CD-ROM, into the Library/Audio/Plug-ins/MOTU Control Surface folder of your Macintosh system drive.

Before starting DP4 click on the TranzPort applet in your taskbar and set the control mode to “TranzPort Native.” This will configure the TranzPort to send and receive the correct set of MIDI messages for use with DP4. For more information on Control Modes see the TranzPort Users Guide.doc.

Start DP4 and open the Setup/Control Surface Setup window. Click on the ‘+’ symbol to add a device to your configuration. Under Driver select “TranzPort” from the available device list. For the MIDI option select “Frontier Design TranzPort-16”. DP4 does allow for multiple control devices if desired. Click OK to close the window. DP4 is now configured to operate with TranzPort.



Operation

The TranzPort has 18 function buttons, 2 local control buttons, a data wheel, and a backlit 2x20 character LCD display. Silk screened labels clearly indicate the basic functions of the buttons. The SHIFT and STOP buttons allow most other buttons to perform more than one function, expanding the range of control that TranzPort has over DP4. SHIFT is a momentary button that is only active while it is being held, and STOP can act that way as well.

When you open a DP4 project, TranzPort's LCD shows the name of the first track in your project, the track fader level, pan position, and the sequencer location. You may also have one or more status LED's lit indicating the track's solo, mute, record arm status, and loop mode status. Pressing play will cause the project to begin playback just as if you had clicked the play button on the screen. Likewise most of the buttons function just like their on-screen equivalents.

The following chart describes the normal and shifted functions of each button. You will also find "Digital Performer Layout v1.03.pdf" on the TranzPort CD-ROM which serves as a quick visual guide for the TranzPort functions with DP4. You may want to print that document for quick reference.

TranzPort Button and Data Wheel Functions

Name	Normal Function	SHIFT+ Function	STOP+ function
REW	Rewind	Go to start	
FFWD	Fast forward	Go to end	
STOP	Stop	ENTER key*	
PLAY	Play	Toggle Big Meters	Toggle Edit view
RECORD	Record	Save	
PREV	Go to previous marker	User-def Shift+F10	User-def Opt+F10
ADD	Add marker at current location	User-def Shift+F11	User-def Opt+F11
NEXT	Go to next marker	User-def Shift+F12	User-def Opt+F12
IN	Set punch in point	Set loop in point	User-def Opt+F6
OUT	Set punch out point	Set loop out point	User-def Opt+F7
PUNCH	Toggle punch mode (LED inactive)	Enable/Disable Click	User-def Opt+F8
LOOP	Toggle loop mode	Toggle level/pan selection for shifted data wheel changes	User-def Opt+F9
< TRACK	Prev track/bus (left/down); hold and turn data wheel to scroll through tracks/busses	Show tracks	User-def Opt+F1
TRACK >	Next track/bus (right/up) ; hold and turn data wheel to scroll through tracks/busses	Show buses	User-def Opt+F2
REC	Toggle track's record arm on/off	Clear all record arming	User-def Opt+F3
MUTE	Toggle track's mute on/off	Clear all mutes	User-def Opt+F4
SOLO	Toggle track's solo on/off	Clear all solos	User-def Opt+F5
UNDO	Undo last action	Redo last undo	
DATA WHEEL	Scroll timeline	Adjust level or pan	
FOOTSWITCH	Punch in/out		

* **SHIFT+STOP** is the keyboard equivalent of ENTER. It is used to remotely clear messages that may appear on screen and otherwise disable the TranzPort. For example, if you press the RECORD button when there are no tracks selected for record a warning message will be displayed on the computer screen. DP4 will not accept any further input from TranzPort or the Mac keyboard until the message is cleared. Pressing SHIFT+STOP will clear the message and allow you to continue without actually going to the computer.

Track or Bus Control

TranzPort is able to navigate the split Track/Bus architecture of DP4. Holding SHIFT and pressing the “< TRACK” button will place the TranzPort into track mode, allowing the display, data wheel and relevant function buttons to control and display individual track parameters. Pressing the “<Track” and “Track>” buttons alone will then let you move from one track to the next. Holding down the “<Track” or “Track>” button and turning the data wheel will let you scroll through the tracks. The LCD display will show the currently selected track name, track number, and fader and pan settings. Likewise, LED’s for record arm, mute, and solo status will update to reflect the state of the selected track. Use the REC, MUTE, and SOLO buttons as well as the data wheel to change or edit the settings for the current track.

Holding SHIFT while pressing “TRACK >” will place the TranzPort into bus mode. This mode operates the same as track mode except that you can now select, and control, any of the buses in your DP4 project by pressing the “<TRACK” and “TRACK >” buttons alone. Holding down the “<Track” or “Track>” button and turning the data wheel will let you scroll through the busses. Because a Bus cannot be soloed or armed for record, the SOLO and REC buttons are not available while in bus mode.

When changing Tracks or Buses with TranzPort, the track number will be momentarily displayed beneath the track name as a navigation aid. After a couple of seconds the track number will disappear and be replaced with mono or stereo metering for that track, or bus.

The Data Wheel

In addition to controlling display contrast, backlight level, and sleep mode delay when used with the local control buttons, the data wheel performs several functions within DP4. Rotating the data wheel will move the “now” time along the timeline of your project. This is handy for quickly locating a point to begin playback or recording. However, if you press and hold the SHIFT button, an arrow will appear on the display next to the level or pan setting of the selected track or bus. If you continue to hold SHIFT and turn the data wheel, you will now be adjusting the parameter indicated by the arrow. Pressing the LOOP button while holding SHIFT will toggle between level and pan control. Holding down the “<Track” or “Track>” button and turning the data wheel will let you scroll through the tracks/busses.

Track Metering

In its normal mode of operation, TranzPort’s LCD display shows meter data for the current track in the lower-left of the LCD display. Up to 16 segments of stereo metering are shown, with a vertical bar indicating the maximum level before clipping. If either the left or right (or mono) audio data clips, then the vertical bar is replaced for several seconds by an open box to indicate clipping.

Starting with v1.03 of the plug-in, “Big Meter Mode” is added. Pressing SHIFT+PLAY toggle the LCD display between its normal display and big meter mode. In big meter mode, the entire LCD display is used for calibrated stereo metering. The buttons and data wheel work normally, and some actions, like changing track, briefly show the new information on the LCD display. In big meter mode, there are 19 segments of metering, plus a max/clip indicator for each stereo channel. There is a background that shows -1, -4, -9, -24, and -42 dBFS levels on the meter.

User-definable Buttons

You can assign the shifted functions of PREV, ADD, and NEXT to any command from the DP4 Commands menu. In addition, there are 12 STOP+button functions that can also be assigned. The DP4 Commands menu is a list of key bindings that let you customize TranzPort for your needs.

To assign commands to these button combinations go to the Setup/Commands panel, or type Shift+L on the Mac keyboard, and follow these steps:

1. Select the desired command from the list in the Commands menu.
2. Click to highlight the box after the command name under 'MAC KEY 1', or 'MAC KEY 2' if the first entry is already used.
3. On the TranzPort, press the user-definable button combination (SHIFT+button or STOP+button). After a moment you will see the keyboard equivalent (e.g. SHIFT+F10 or OPT+F4) appear in the box.
4. Repeat this for each of the button combinations you wish to assign, then close the window.

If any of the key commands has already been used, a warning message will appear to alert you. You can choose to cancel the command or delete the previous one and add the new one.