

SAWStudio 4.1 and AlphaTrack

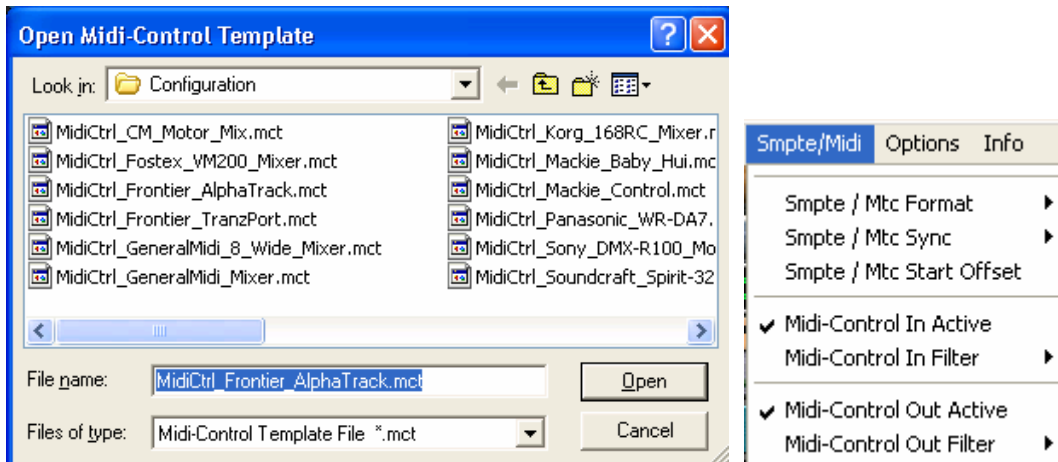
This document assumes you have already installed the AlphaTrack Windows driver and have the AlphaTrack ready for operation. (If not, see the AlphaTrack Users Guide, or Quick Start Guide for installation details.) It is based on using AlphaTrack v1.2.0 drivers with SAWStudio 4.1, but may apply to later versions of software as well.

SAWStudio Set-up

Make sure the AlphaTrack is connected and the control mode is set to 'AlphaTrack Native' before starting SAWStudio. This will configure the AlphaTrack to send and receive the correct set of MIDI messages for use with SAWStudio.



Launch SAWStudio. Under Options/MIDI Device Setup select the AlphaTrack as the MIDI-Control Device for In and Out Go to File/MIDI-Control Template and select 'MidCtrl_Frontier_AlphaTrack', then activate MIDI control In and Out under the SMPTE/MIDI menu and you are ready to go. You can then save these settings in your preferences if you wish.



Overview

The AlphaTrack features a high-resolution, 100mm, touch-sensitive, motorized fader, 3 touch-sensitive encoders, 5 modes select buttons, 8 general function buttons, channel dependent backlit Rec, Solo, and Mute buttons, 5-button transport controls, SHIFT key, a touch-sensitive strip, and a 32-character LCD display. There are also 17 LED indicators. Silk-screened labels clearly indicate the basic function of many of the buttons, however detailed instructions for all functions follow. On the back, next to the USB jack, is a 1/4" jack for a standard momentary foot-switch.

Pressing play will cause the project to begin playback just as if you had clicked the play button on the screen. Likewise most of the basic controls function just like their on-screen equivalents. While the AlphaTrack employs many advanced features, it is designed for ease of use right out of the box.

SHIFT and “STICKY SHIFT”

The SHIFT key allows other buttons to perform more than one function, expanding the range of control that AlphaTrack has over Audition. Press and hold SHIFT, then press another function button to access its expanded feature. Note that SHIFT has a “sticky” feature to simplify one-handed operation. Pressing SHIFT alone will lock it in the enabled position. The SHIFT LED will blink steadily. Now multiple shifted functions can be performed without holding the SHIFT key. Press SHIFT again to exit “sticky” mode.

Below is a chart that summarizes the normal and shifted functions of each function button. Additional details for many functions are found later in this document. You will also find “SAWStudio Layout.pdf” on the CD-ROM, or website which serves as a quick visual guide for the AlphaTrack functions. You may want to print this document for quick reference.

AlphaTrack Button Functions

Name	Normal Function	Shifted Function
REW	Rewind 10 Seconds	Go to Home
FFWD	Fast forward 10 Seconds	Go to End
STOP	Stop / Cancel (dialog)	Save Session
PLAY	Play / Accept (dialog)	Activate Live mode
RECORD	Record	Record Ready
◀ TRACK	Previous track	Set Start
TRACK ▶	Next track	Set End
LOOP	Auto-Rewind/Record Loop mode	Auto-Record Layer mode
FLIP	Multitrack Position mode	n/a
F1	Go to Locate Point 1	Set Locate Point 1
F2	Go to Locate Point 2	Set Locate Point 2
F3	Go to Locate Point 3	Set Locate Point 3
F4	Go to Locate Point 4	Set Locate Point 4
REC	Toggle track record arm	Arm Multiple Tracks
SOLO	Toggle track solo on/off	Clear All Solos
MUTE	Toggle track mute on/off	n/a
PAN	Select any controller type	n/a
SEND	Select Send controller types	n/a
EQ	Select EQ controller types	n/a
PLUG-IN	Active FX-Pre/Post views	Close FX-Pre/Post views
AUTO	Enable Automation mode	n/a
FOOTSWITCH	Play/Stop or Punch In/Out	n/a

Track Control

Track ◀ Button: Decrements the Track / Channel.

Shift Mode: Marks the begin position. When any marked area is active, the LCD displays a small mark in the top right corner.

Ctrl Mode: Set by pushing the left or right parameter knob. Lights both track button LEDs and jumps down one section from Output to Return to Input channels.

Track ▶ Button: Increments the Track / Channel.

Shift Mode: Marks the end position. When any marked area is active, the LCD displays a small mark in the top right corner.

Ctrl Mode: Set by pushing the left or right parameter knob. Lights both track button LEDs and jumps up one section from Input to Return to Output channels.

The LCD display will show the currently selected track name, controller type and value. Likewise, LED's for record arm, mute, and solo status will update to reflect the state of the selected track. Use the REC, MUTE, and SOLO buttons to edit the settings for the current track.

Loop Button

Toggles AutoRewind on and off. When active, regular MT playback will jump back to the starting point when playback is stopped. If there is an active marked area, MultiTrack playback will continue to loop the marked area.

Record Mode: Toggles AutoRecord Loop Mode on and off. SRP recordings will continue to create new takes of the marked area, looping back to the cursor position pre-roll starting point.

Record-Shift Mode: Toggles AutoRecord Layer Loop Mode on and off, which fills layers with new takes on the Lite and Full SAWStudio versions.

Flip Button

Switches the Control Type to MultiTrack Position. The LCD now displays Timeline position information in the current Timeline display mode. Pressing the button again switches the Control Type back to the previous type selection.

Transport Rewind Button

Moves the current cursor position back 10 seconds on the timeline. This function will auto-locate the playback if active.

Shift Mode: Jumps to the session home position.

Transport Fast Forward Button

Moves the current cursor position forward 10 seconds on the timeline. This function will auto-locate the playback if active.

Shift Mode: Jumps to the session end position.

Transport Stop Button

Stops playback, record and live input operations.

Shift Mode: Saves and updates the session edl.

Msg / Dialog Mode: When a message dialog box is active, acts as a cancel or "no" response. The LCD will display many important messages directly.

Transport Play Button

Starts MultiTrack play or SRP play operations.

Shift Mode: Activates Live Mode.

Msg / Dialog Mode: Acts as an Okay, Yes, or Enter response.

Transport Record Button

Starts a multitrack record operation or punches in during SRP play mode.

Shift Mode: Starts a RecRdy operation.

Touch Strip

Acts as a position shuttle which adjusts the MultiTrack cursor position. When first touched, the Flip button is activated and the LCD will display the cursor position.

FootSwitch Jack

Toggles Playback on and off.

Record Mode: Toggles Punch-In and Punch-Out during an SRP operation. Does a Punch-In on a straight Record operation.

Encoders and Mode buttons

In SAWStudio AlphaTrack's mode buttons and encoders behave a little differently than with most other applications. Use either the left or right encoder to select a parameter, or "Controller Type" to edit with the middle encoder. Below is a chart indicating the basic functions of each encoder as well as details about their function in each mode.

Encoder Modes

	Encoder 1	Encoder 2	Encoder 3
PAN	Select any controller type (parameter)	Adjust selected controller type (parameter)	Select any controller type (parameter)
SEND	Select Send related controller types	Adjust selected controller type	Select Send related controller types.
EQ	Select EQ related controller types	Adjust selected controller type	Select EQ related controller types
PLUG-IN (Open FX-Pre/Post)	Select controller type	Adjust selected controller type	Select controller type
Shift (Close FX-Pre/Post)	Select controller type	Adjust selected controller type	Select controller type
AUTO (Enable Automation)	Track Select	Adjust selected controller type	Controls parameter currently under mouse.

PAN Mode

Left or Right Parameter Knob: Either of these knobs act as a function selector, scanning through different control types. Use the left or right knob, depending on whether you are left or right handed so you do not cover up the display as you turn the knob.

The current selectable control types are: Layer; Fader; Pan; Aux 1 In; Aux 1 Pst Fdr; Aux 1 Lvl; Aux 1 Pan; Aux 2 In; Aux 2 Pst Fdr; Aux 2 Lvl; Aux 2 Pan; Aux 3 In; Aux 3 Pst Fdr; Aux 3 Lvl; Aux 3 Pan; Aux 4 In; Aux 4 Pst Fdr; Aux 4 Lvl; Aux 4 Pan; Aux 5 In; Aux 5 Pst Fdr; Aux 5 Lvl; Aux 5 Pan; Aux 6 In; Aux 6 Pst Fdr; Aux 6 Lvl; Aux 6 Pan; Comp In; Comp Gn; Comp Thr; Comp Ratio; Comp Rel; Comp Att; Gate In; Gate Rvs; Gate Thr; Gate Flr; Gate Rel; Gate Att; Dyn Key Listen; Dyn Eq Lo; Dyn Eq Hi; Dyn Key; Eq In; Eq LoCut In; Eq LoCut Frq; Eq HiCut In; Eq HiCut Frq; Eq Gn 1; Eq Frq 1; Eq Q 1; Eq Gn 2; Eq Frq 2; Eq Q 2; Eq Gn 3; Eq Frq 3; Eq Q 3; Eq Gn 4; Eq Frq 4; Eq Q 4; Eq Gn 5; Eq Frq 5; Eq Q 5; Mono; Swap LR; Phase Rvs; Attenuator; MultiTrack Position

The LCD displays the currently selected type and value.

Center Parameter Knob: This knob adjusts the value for the currently selected control type. If the current type is the MultiTrack Position display, this knob has no effect and the position is adjusted by the various transport controls and touch strip.

Pressing the knob as a switch sets the control to the default value.

Shift Mode: For Aux_Lvl control types sets the control to -inf.

Pressing the left or right encoder will cause both track selection LEDs to illuminate. This is a special mode for track selection and provides a short-cut to jump to alternate channel types. See more above under 'Track Control'.

SEND Mode

Switches the Control Type to Aux_Lvl_1 for the current channel. Repeated pressings switch to Aux_Lvl_2, Aux_Lvl_3, Aux_Lvl_4, Aux_Lvl_5, Aux_Lvl_6, and then back around to the beginning. The Send LED lights when in Aux Mode.

EQ Mode

Switches the Control Type to Eq_In for the current channel. Repeated pressings switch to Eq_Lo_In, Eq_Hi_In, Eq_Gain_1, Eq_Gain_2, Eq_Gain_3, Eq_Gain_4, Eq_Gain_5, and then back around to the beginning. The EQ LED Lights when in Eq Mode.

PLUG-IN Mode

Activates and opens (if needed) the FX_Pre and FX_Pst views. If the current Hot Track is an Output track, it also activates the Final Res patch view.

Shift Mode: Closes all FX patch views.

AUTO Mode

Press AUTO to enable/disable Automation mode.

Pop-Up Windows

SAWStudio supports the ability to remotely respond to pop-up. The following commands are available when a pop-up window appears:

STOP = Cancel or No

PLAY = OK or Yes