

# MultiTrackStudio Layout

**EGuitar**  
Pan: 50

FootSwitch  
User Definable

ANY SOLO

AUTO

WRITE

READ

Toggle Play/Rec buttons

Solo Mixer Section

Clear Solo

Mute Mixer Section

Fader Silent

SHIFT

LEGEND

Normal

Shift

PAN SEND EQ PLUG-IN AUTO

Set Punch In Go to Punch In Set Punch Out Go to Punch Out Toggle Punch mode Alternate Takes Editor Undo Redo

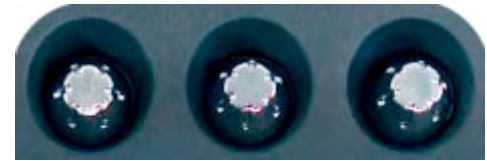
Prev Mixer Section Next Mixer Section Toggle Cycle Mode Add Marker First Mixer Section Last Mixer Section Delete Marker

RTZ END ESC ENTER MODE

Rewind Home Fast Forward Go to End Stop/Cancel Msg To last start position Play/Accept Msg To next start position

Left Tap One Finger Two Finger Right Tap

FRONTIER



## Pan Mode

Shift	Track Select	Pan	Edit Mouse
		Marker Select	Zoom In/Out

## Send Mode

Shift	Track Select	Effect 1	Edit Mouse
		Marker Select	Zoom In/Out

## EQ Mode

Shift	Track Select	Effect 2	Edit Mouse
		Marker Select	Zoom In/Out

## Plug-In Mode

Shift	Track Select	Effect 3	Edit Mouse
		Marker Select	Zoom In/Out

## Auto Mode

Shift	Track Select	Output Select	Edit Mouse
		Marker Select	Zoom In/Out

## Notes

"Write" LED indicates Fader Silent.  
Shift + AUTO open/close Editor.  
"What Is?", Hold Record while pushing another button to see function name in display.  
Record LED - any armed track