

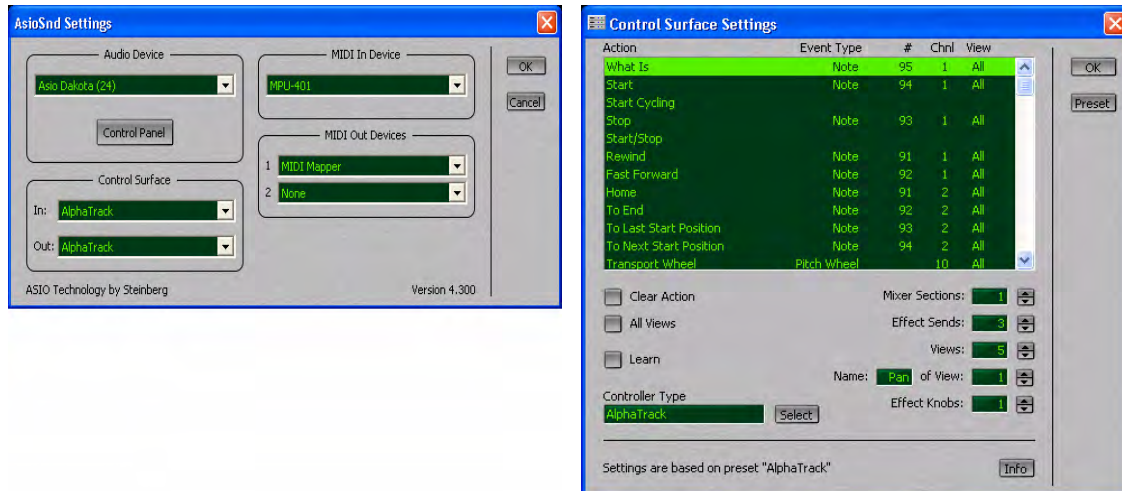
MultitrackStudio 4 and AlphaTrack

This document assumes you have already installed the AlphaTrack Windows driver and have the AlphaTrack ready for operation. (If not, see the AlphaTrack Users Guide, or Quick Start Guide for installation details.) It is based on using AlphaTrack v1.1.0 drivers with MultitrackStudio 4.3.1, but may apply to later versions of software as well.

MultitrackStudio Set-up

Make sure the AlphaTrack is connected and the control mode is set to 'AlphaTrack Native' before starting MultitrackStudio. This will configure the AlphaTrack to send and receive the correct set of MIDI messages for use with MultitrackStudio.

Start MultitrackStudio and open the Studio menu's Devices window (CTRL+D), click the Settings button and select the 'AlphaTrack' for both IN and OUT in the "Control Surface" section and click OK. Next open the Studio menu's Control Surface window (CTRL+F), click the Preset button and select 'AlphaTrack'. Note - The Info button (at the bottom of the Control Surface window) opens a text file listing the functions available in the AlphaTrack preset.



Overview

The AlphaTrack features a high-resolution, 100mm, touch-sensitive, motorized fader, 3 touch-sensitive encoders, 5 modes select buttons, 8 general function buttons, channel dependent backlit Rec, Solo, and Mute buttons, 5-button transport controls, SHIFT key, a touch-sensitive strip, and a 32-character LCD display. There are also 17 LED indicators. Silk-screened labels clearly indicate the basic function of many of the buttons, however detailed instructions for all functions follow. On the back, next to the USB jack, is a 1/4" jack for a standard momentary foot-switch.

Pressing play will cause the project to begin playback just as if you had clicked the play button on the screen. Likewise most of the basic controls function just like their on-screen equivalents. While the AlphaTrack employs many advanced features, it is designed for ease of use right out of the box.

SHIFT and "STICKY SHIFT"

The SHIFT key allows other buttons to perform more than one function, expanding the range of control that AlphaTrack has over Audition. Press and hold SHIFT, then press another function button to access its expanded feature. Note that SHIFT has a "sticky" feature to simplify one-handed operation. Pressing SHIFT alone will lock it in the enabled position. The SHIFT LED will blink steadily. Now multiple shifted functions can be performed without holding the SHIFT key. Press SHIFT again to exit "sticky" mode.

Below is a chart that summarizes the normal and shifted functions of each function button. Additional details for many functions are found later in this document. You will also find "MultitrackStudio Layout.pdf" on the CD-ROM, or website which serves as a quick visual guide for the AlphaTrack functions. You may want to print this document for quick reference.

AlphaTrack Button Functions

Name	Normal Function	Shifted Function
REW	Rewind	Go to Home
FFWD	Fast forward	Go to End
STOP	Stop / Cancel (dialog)	Go to last start position
PLAY	Play / Accept (dialog)	Go to next start position
RECORD	"What Is?" see below	n/a
◀ TRACK	Previous track (mixer section) Show previous 2 lines (dialog)	Go to first track Go to first 2 lines (dialog)
TRACK ▶	Next track (mixer section) Show next 2 lines (dialog)	Go to last track Go to last 2 lines (dialog)
LOOP	Toggle Cycle mode	n/a
FLIP	Add Marker	Delete Marker
F1	Set track Punch-In point	Move to Punch-In point
F2	Set track Punch-Out point	Move to track Punch-Out point
F3	Toggle Punch Recording mode	Alternate Take
F4	Editor Undo	Editor Redo
REC	Toggle track Play / Rec state	n/a
SOLO	Toggle track solo on/off	Clear Solo
MUTE	Toggle track mute on/off	Fader Motor On/Off
PAN	Pan on middle encoder	Open first effect slot
SEND	Send 1 level on middle encoder	Open second slot
EQ	Send 2 level on middle encoder	Open third slot
PLUG-IN	Send 3 level on middle encoder / Close (effect window)	Enable Effect Selector (see below)
AUTO	Output Selector / Bypass (selected effect)	Open/Close Editor
FOOTSWITCH	n/a	n/a

Track Control

AlphaTrack is able to navigate through all of the Tracks of your MultitrackStudio project, allowing the display, fader, encoders, and relevant function buttons to control and display individual track parameters. Pressing the “◀ Track” and “Track ▶” buttons will then let you move from one track to the next. Optionally in most modes the left encoder can also be used to select tracks, including effects returns and the master buss. The LCD display will show the currently selected track name. Likewise, LED’s for record arm, mute, and solo status will update to reflect the state of the selected track. Use the REC, MUTE, and SOLO buttons to edit the settings for the current track.

The Record Button

The RECORD button (which has no equivalent in MultitrackStudio) is used as a 'What Is?' button. If you press any other button while holding the RECORD button down you can read that button's function momentarily on the AlphaTrack display. This works with Shifted combinations as well and is useful if you forget what a particular button's function is.

The RECORD LED is not linked to the RECORD button and lights whenever ANY track is armed for recording.

The Loop Button

Pressing the LOOP button enables and disables MultitrackStudio's Cycle mode. The Loop LED will light to indicate that Cycle mode is active. Follow normal MultitrackStudio procedures to define a loop region, or press PLAY and a pop-up menu will open allowing you to use the middle encoder to select a 'Cycle End Point' from your list of existing markers. Pressing PLAY again will cause playback to begin at the current timeline location and continue to the selected end point, then repeat continuously. Turning Cycle mode on and off while the sequencer is running will not be recognized until the sequencer is stopped and restarted. Pressing STOP at any time will automatically clear the Cycle region markers.

Touch Strip

Near the bottom edge of AlphaTrack is an innovative feature called the scroll strip, which is similar to a ribbon controller and is another touch-sensitive surface that can be used in a couple of ways.

Sweep 1 finger across the strip in either direction to jog the current timeline position in the same direction. Use 2 fingers together to vari-speed shuttle back and forth. Shuttle speed will depend on how close to either end you move your fingers.

Whenever you use the scroll strip you will also notice that the current timeline position is displayed on the top line of the AlphaTrack's LCD display.

Motor On/Off

If you want to turn off AlphaTrack's fader motor for any reason (for example, to conserve battery power when using AlphaTrack with a notebook computer) you can do so by pressing Shift + MUTE. The 'Write' LED will illuminate to indicate that the fader motor is disabled. Press Shift + MUTE again to re-enable the motor.

Encoders and Mode buttons

In MultitrackStudio AlphaTrack's mode buttons behave a little differently than with most other applications. Not only do they select a parameter for the middle encoder, but are also used to directly open and edit each of MultitrackStudio's effects sends. Below is a chart indicating the basic functions of each encoder as well as details about their function in each mode.

Encoder Modes

	Encoder 1	Encoder 2	Encoder 3
PAN	Track Select	Pan adjust (push for fine)	Controls parameter currently under mouse.
Shift		Select Marker	Zoom Editor In/Out
Shift + PAN (open slot 1)	Select slot 1 Parameter	Adjust slot 1 Parameter	
SEND	Track Select	Effect Send 1 level	Controls parameter currently under mouse.
Shift		Select Marker	Zoom Editor In/Out
Shift + SEND (open slot 2)	Select slot 2 Parameter	Adjust slot 2 Parameter	
EQ	Track Select	Effect Send 2 level	Controls parameter currently under mouse.
Shift		Select Marker	Zoom Editor In/Out
Shift + EQ (open slot 3)	Select slot 3 Parameter	Adjust slot 3 Parameter	
PLUG-IN (close effect slot)	Track Select	Effect Send 3 level	Controls parameter currently under mouse.
Shift		Select Marker	Zoom Editor In/Out
Shift + PLUG-IN	- press this before opening	a slot to open effect selector	or unified synth.
AUTO (bypass effect slot)	Track Select	Output Selector	Controls parameter currently under mouse.
Shift		Select Marker	Zoom Editor In/Out
'New File' Properties Dialog	Quality (16 or 32 bit)	Mono or Stereo Tracks	

PAN Mode

Press PAN and use the middle encoder to control the current track's Pan position. Press and turn the encoder for finer resolution. The left encoder will select the current track, and the right encoder will control whatever parameter the mouse is currently hovering over.

Press Shift + PAN to open the window for the effect inserted into slot #1. Once open use the left encoder to select a parameter and the middle encoder to adjust that parameter. Press PLUG-IN to close the effect window or AUTO to toggle the effects Bypass button

SEND Mode

Press SEND and use the middle encoder to control the level of Effect Send 1 on the current track. Press and turn the encoder for finer resolution. The left encoder will select the current track, and the right encoder will control whatever parameter the mouse is currently hovering over.

Press Shift + SEND to open the window for the effect inserted into slot #2. Once open use the left encoder to select a parameter and the middle encoder to adjust that parameter. Press PLUG-IN to close the effect window or AUTO to toggle the effects Bypass button

EQ Mode

Press EQ and use the middle encoder to control the level of Effect Send 2 on the current track. Press and turn the encoder for finer resolution. The left encoder will select the current track, and the right encoder will control whatever parameter the mouse is currently hovering over.

Press Shift + EQ to open the window for the effect inserted into slot #3. Once open use the left encoder to select a parameter and the middle encoder to adjust that parameter. Press PLUG-IN to close the effect window or AUTO to toggle the effects Bypass button

PLUG-IN Mode

Press PLUG-IN and use the middle encoder to control the level of Effect Send 3 on the current track. Press and turn the encoder for finer resolution. The left encoder will select the current track, and the right encoder will control whatever parameter the mouse is currently hovering over.

Press Shift + EQ before pressing Shift + PAN, etc. (opening any effect slot window) to open the Unified Synth, or Effects Selector. Use this to add or change an effect in an empty slot.

AUTO Mode

Press AUTO and use the middle encoder to select the output of the current track. The left encoder will select the current track, and the right encoder will control whatever parameter the mouse is currently hovering over. If an Effect Send window is open AUTO can be used to toggle its Bypass state.

Pop-Up Windows

MultitrackStudio supports the ability to remotely respond to pop-up windows and has the added ability to display message text in the AlphaTrack display. The following commands are available when a pop-up window appears:

STOP = Cancel or No

PLAY = OK or Yes

REW = Show previous 2 lines of message

Shift + REW = Show first 2 lines

FFWD = Show next 2 lines of message

Shift + FFWD = Show last 2 lines

Middle Encoder = select from list selection such as 'Cycle End Point'

For New File Properties dialogs:

STOP / PLAY = OK

Middle Encoder = Quality (16, 24bit, etc.)

Left Encoder = Channels (Mono or Stereo)

User Programmable commands

All functions of the AlphaTrack can be easily customized within MultitrackStudio. To change the default settings:

1. Open the Control Surface panel from under the Studio menu and select the AlphaTrack preset if it isn't already selected. (you can always return to the default settings by reselecting the AlphaTrack preset).
2. Click the Learn button to enable Learn mode.
3. Highlight a function in the Action list that you want to assign and press the AlphaTrack button combination that you want it assigned to. Click the All Views button if you want it to be a global command.
4. Repeat step 3 for as many functions as you want and click OK. You are done!